



MONTHLY MEMBERSHIP PROGRESS REPORT

District 321B1

Results as of: 6/30/2017

GMT: OPEN

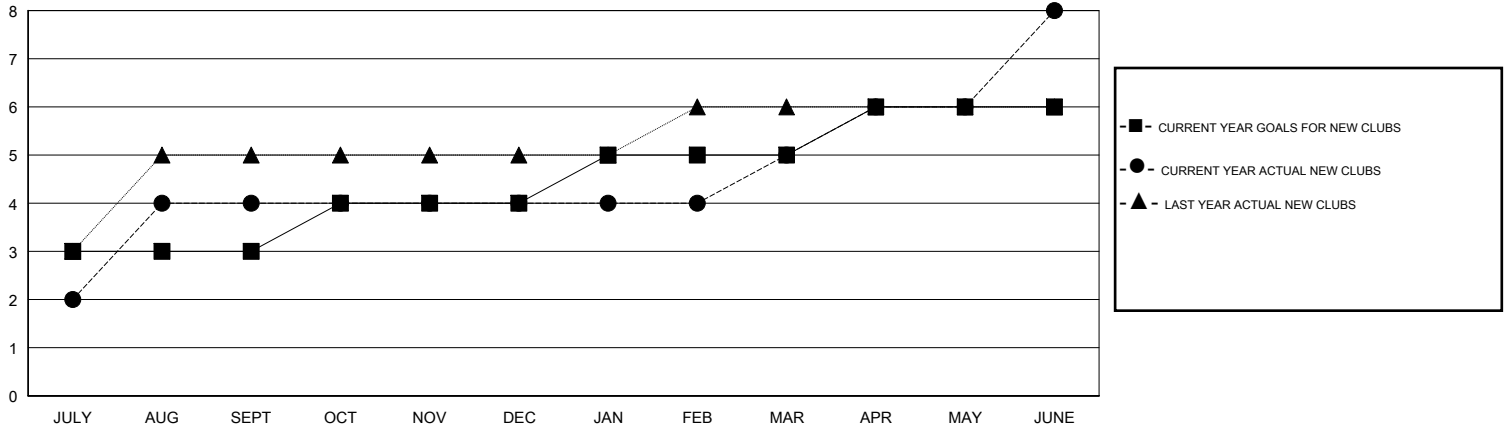
LOCATION INDIA

GMT CA

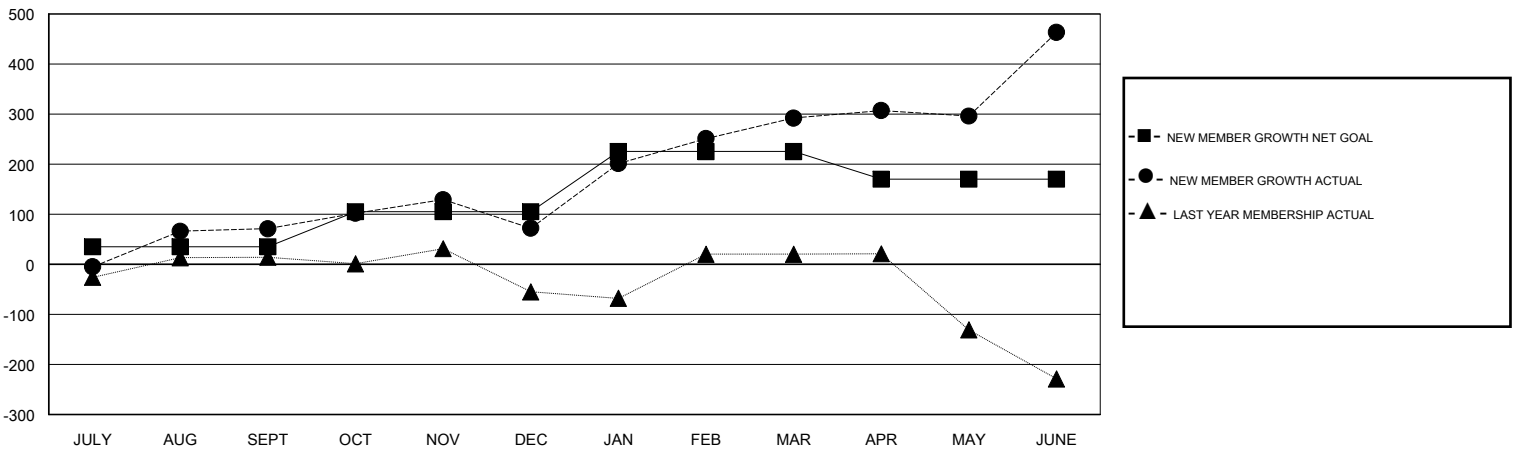
Clubs			
RESULTS FOR 2016-2017			
QUARTER	NEW CLUB GOAL	NEW CLUBS	DROPPED CLUBS
JULY/AUG/SEPT	3	4	0
OCT/NOV/DEC	1	0	1
JAN/FEB/MAR	1	1	0
APR/MAY/JUNE	1	3	2

Members			
RESULTS FOR 2016-2017			
QUARTER	NEW MEMBER GROWTH NET GOAL (not reinstated or transfers)	NEW MEMBER GROWTH ACTUAL (not reinstated or transfers)	DROPPED MEMBERS ACTUAL (including transfers)
JULY/AUG/SEPT	35	215	144
OCT/NOV/DEC	70	85	84
JAN/FEB/MAR	120	253	33
APR/MAY/JUNE	-55	307	136

GOALS AND ACTUAL NEW CLUBS CUMULATIVE



GOALS AND ACTUAL MEMBERS CUMULATIVE



DROPPED CLUBS: 3	67 CLUBS OF 86 ADDED 1 OR MORE NEW MEMBERS	<u>GENDER DISTRIBUTION</u>	
DROPPED MEMBERS		MALE	1,688 (60.61%)
DECEASED	7	FEMALE	1,097 (39.39%)
CLUB CANCELLED	38	TOTAL FAMILY UNIT MEMBERS	
OTHER	352	1,560	
TOTAL	397	FAMILY MEMBERS PAYING HALF DUES	
		829	

[CLICK HERE FOR CUMULATIVE MEMBERSHIP DATA](#)